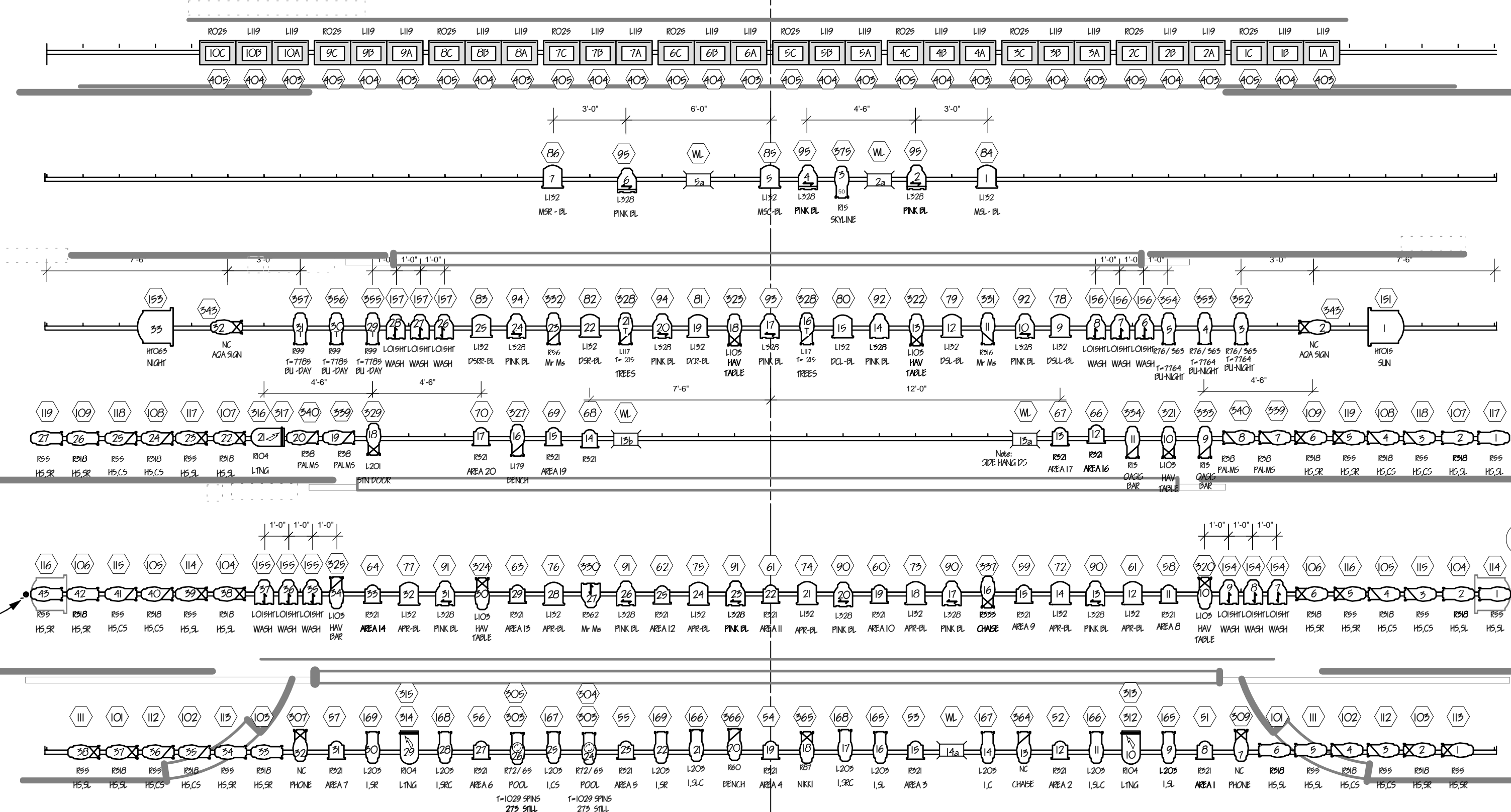


Wraparound Cyc	60
STAR DROP	58
ELECTRIC 5 LINE 55	56
MOON BOX ROUND	54
BLK SCRM LEGS, BORDER	52
OPEN	50
MY FINALE	48
SHELL	46
ELECTRIC 4 LINE 47	44
AND FINALE	42
MOVE SCREEN & BLK OUT	40
OPEN	38
FRAMED SKYLINE	36
Black Traveler	34
PORTAL 3 AND BORDER	32
OPEN	30
USL AERO HANGER	28
ELECTRIC 3 LINE 36	26
SHELL	24
CLUB HAVANA PALMS	22
AQUACADE	20
ELECTRIC 2A	18
ISLAND PALM TREE	16
BLACK LEGS	14
PORTAL 2 AND BORDER	12
DSR AERO HANGER	10
OPEN	8
CLUB HAVANA SIGN	6
TRAIN STATION	4
Black Traveler	2
ELECTRIC 2	0
SHELL	-2
ACT DROP	-4
BLACK LEGS	-6
PORTAL 1	-8
BLACK BORDER	-10
MOVIE MARGUERITE	-12
ELECTRIC 1 LINE 5	-14
Black Border	-16
House Curtain	-18
Grand Valance	-20
Fire Curtain	-22



**KEY:**

	IANARO IRIS 3, 1000W
	COLORTRAN F, 5000W
	SECTION OF ABOVE.
	STRAND F, 2000W
	ALTMAN F, 1000W
	WILD FIRE, 400W, UV
	S4 PAR MFL, 575W
	S4 PAR WFL, 575W
	PAR64 MFL, 1000W
	PAR BEAMLENS ANGLE
	S4 36 DEGREE, 575W
	S4 26 DEGREE, 575W
	S4 19 DEGREE, 575W
	S4 ZOOM 15-30, 575W
	CTRAN 30 DEG, 750W
	CTRAN 20 DEG, 750W
	ALTMAN, 6 X 16, 750W
	ALTMAN, 6 X 22, 750W
	ALTMAN, 12 DEG, 750W
	GAM SCENE MACHINE
	DATAFLASH STROBE
	LYCIAN, 400W HTI
	ALTMAN Q LITE, 1000W
	APOLLO TWIN SPIN
	TEMPLATE
	TOP HAT
	IRIS

- NOTES**
- See Plate 2 for Approx. Ladder, and Practical Placement. See Designer.
  - All Spacing on 1'-6" Centers.
  - All Fresnels should be in Spot Position for Focus.
  - All PAR Bottles / Lenses should be set as indicated on plot at load in.
  - All Trims are Approximate. To be Finalized at Focus.
  - Provide AC Power to all Stand Lights in Pit on a Non-Dim Circuit.
  - Provide Blue Light Circuit Backstage. See R.M.E. for details.
  - Followspots and Projector FOH are powered from Catwalk Edisons.
  - FOH Beam 3 and balcony rail have been moved for Clarity.
  - Strobe Canons have two Channels. Nearest to rear of the light is a Non Dim Channel the second is a DMX channel to control rate.
  - Twin Spins have two Channels. Nearest to rear of the light is a c-a dimmer, the second is a DMX channel to control rotation.
  - Provide Cue Light System from SM Panel to Conductor and to fly rail. See SM for details.
  - Houselights will be run from Unison control.
  - Color Designation R-Rosco, L-Lee
  - Have available by Boom #4 SR and SL the following colours in S4 Par frames - R16, L134, R46, R27, L180, R52, R79, L140, L116.
  - Barn Door all 2K Fresnels, 1K Fresnels on #1 Electric, and 5Ks on Tail Downs off #2 Electric.

COLLEGE CONSERVATORY OF MUSIC  
UNIVERSITY OF CONCORDIA

## MY ONE AND ONLY

CORSETT THEATRE  
NOVEMBER 16th - 19th

**DIRECTED BY:** AUBREY BERG  
**SCENERY BY:** TOM UMFRID  
**LIGHTING BY:** A. PAUL DAVIES  
**ASSISTED BY:** LIZ LAMMER  
**ELECTRICIAN:** ERIC BLOOM  
**STAGE MANAGER:** JEN ARY

### LIGHT PLOT

SCALE: 1/4" = 1'-0" EXCEPT WHERE NOTED

DATE: 16TH NOVEMBER, 2000

DRAWN: APD

1  
of 3