

KEY	
	19' SOURCE 4, 575W
	26' SOURCE 4, 575W
	36' SOURCE 4, 575W
	50' SOURCE 4, 575W
	15'-30' ZOOM SOURCE 4, 575W
	ALTMAN 6 X 12, 750W
	ALTMAN 6 X 22, 750W
	ALTMAN 12', 750W
	30' COLORTRAN HPX600, 600W
	20' COLORTRAN ENG, 750W
	12' COLORTRAN FRESNEL, 5000W
	8' STRAND FRESNEL, 2000W
	6' ALTMAN FRESNEL, 1000W
	NSP PAR 64, 1000W
	WFL PAR 64, 1000W
	NSP PAR SOURCE 4, 575W
	WFL PAR SOURCE 4, 575W
	MFL PAR 18 MR-16, 75W
	HIGHEND DF100 SMOKE MACHINE
	ROSCO 1500 SMOKE MACHINE
	SCENERY BUMPER
	COLORTRAN BROAD 1000W
	ALTMAN Q LITE 1000W

LEGEND	
	UNIT NUMBER
	CHANNEL & COLOR
	TEMPLATE
	IRIS
	GOBO ROTATOR
	WYBRON SCROLLER
	LAMPLENS ROTATION

THIS DRAWING REPRESENTS VISUAL CONCEPTS AND CONSTRUCTION SUGGESTIONS ONLY. The Designer is not responsible for the structural or electrical requirements of this design, and will not be held responsible for any errors or omissions in construction, handling, or use. All materials and construction methods shall conform to the most current applicable Federal and Local Fire, Safety, Energy and Environmental Codes.



REVISION	DATE
1	05/17/01
2	05/20/01
3	06/20/01
4	04/28/01
5	04/17/01
6	

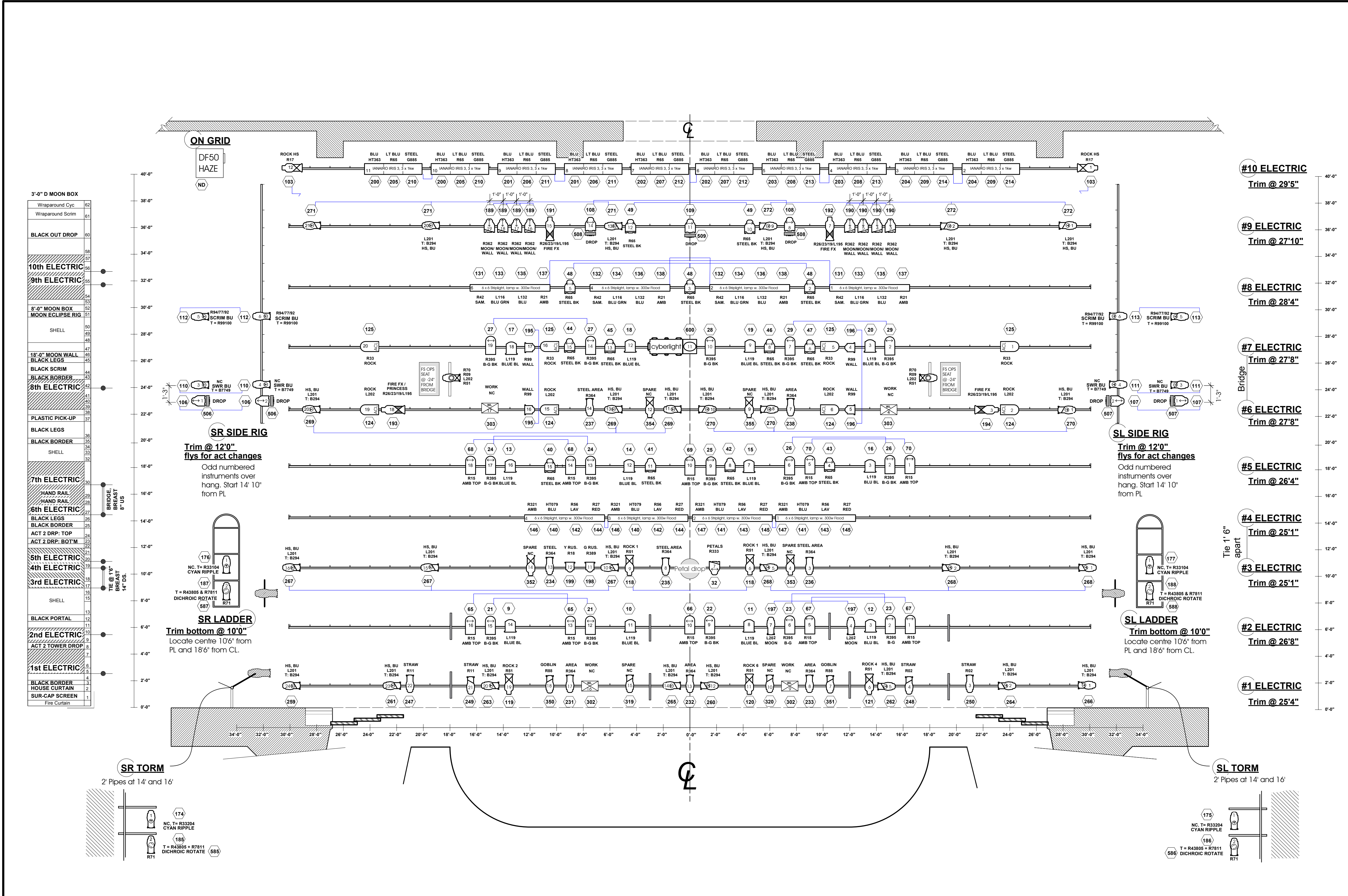
UNIVERSITY OF CINCINNATI COLLEGE OF CONSERVATORY OF MUSIC

CORSETT ALBUM CINCINNATI, OH

DIRECTED BY: MALCOLM FRAZER  
SCENERY BY: TOM IVERICK  
LIGHTING BY: A. PAUL DAVIES  
ELECTRICIAN: ANDY OTT

**LIGHTING PLOT OVER STAGE**

SCALE: 1/4" = 1'-0"  
DATE: 05/17/01  
DRAWN: APD



- PLATE SPECIFIC NOTES
- Hanging positions have been moved for clarity. For Electrics see line set schedule for actual positions us / ds, Side rig actual position is 12' 10" from PL.
  - Trim Bridge as indicated at 27' 8" then breast up stage 8' if shell position allows on cables above. Final trim will be 27' 11".
  - Fire Rag 2nd, 5th and 8th Electrics.
  - Bumpers on 5th not added at load in and subsequently not needed when breast up stage. Bumpers on 1st and 2nd as indicated.
  - When building Bridge place Spot hanging pipe in place first at 18' either side of centre. Then place chais in position then build bridge.
  - Bridge from far SL side of bridge where ladder should be located. Leave gap for spot chair assembly. Place one bridge piece beyond SR chair.
  - ACLs on either side of Bridge are four-fered as channelled, use stage pin cables with twistlock adaptors in stock. Work lights on each electric can be twofered.
  - Scrollers on 9th removed on day of opening due to failing units - replaced with L140 colour.

STEEL AND GLASS GOBOS


Glass gobos generously sponsored by ROSCO

- GENERAL NOTES
- All lights are on 18" Centres, or multiples of, unless noted.
  - Colour Designation - R = Rosco, L = Lee, HT = Lee High Temp, G = Gam, I- & ii- prior to colour indicates item is switched at act breaks. Act 1 colour is used in Act 3.
  - 7 Scrollers are in use, all with 7.5" frame. Keep 8th Scroller as spare. Standard Scoll = L130, HT009, L134, HT046, HT027, HT180, HT025, HT079, L140, L116. All colour and gobos in at load in as for Acts 1 & 3. Take particular care with glass patterns and colorizers.
  - Cut all HT colour large by 1" all around to allow shrinking.
  - Provide Stand Lights for Orchestra, to be controlled on a Non Dim Circuit from the Stage Managers Panel. Director, Conductor and LD will discuss gelling blue.
  - The Strand 550 will be placed House centre from load in until the Monday before the shows (final details to be finalised).
  - House and Work lights will be controlled by Unison. Prior to cuing and focus provide the dimmers numbers so she can place them on subs.
  - Provide Blue Running Lights Back Stage.
  - Nothing here is set in stone ... it can change if its awkward, if the artistic intent changes or someone suggests an easier way to do something. Just consult Paul!
  - Relax and enjoy, the show has great music, singing, costumes, sets, direction, props (ok one big great prop); and will come together with a good running crew, makeup, sound plus of course stage management and lighting. The effort on everyone's part is much appreciated - Thanks all.