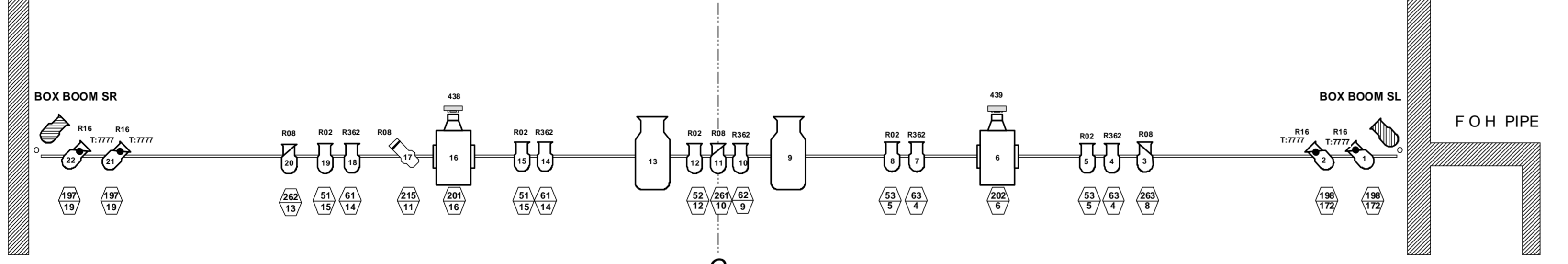
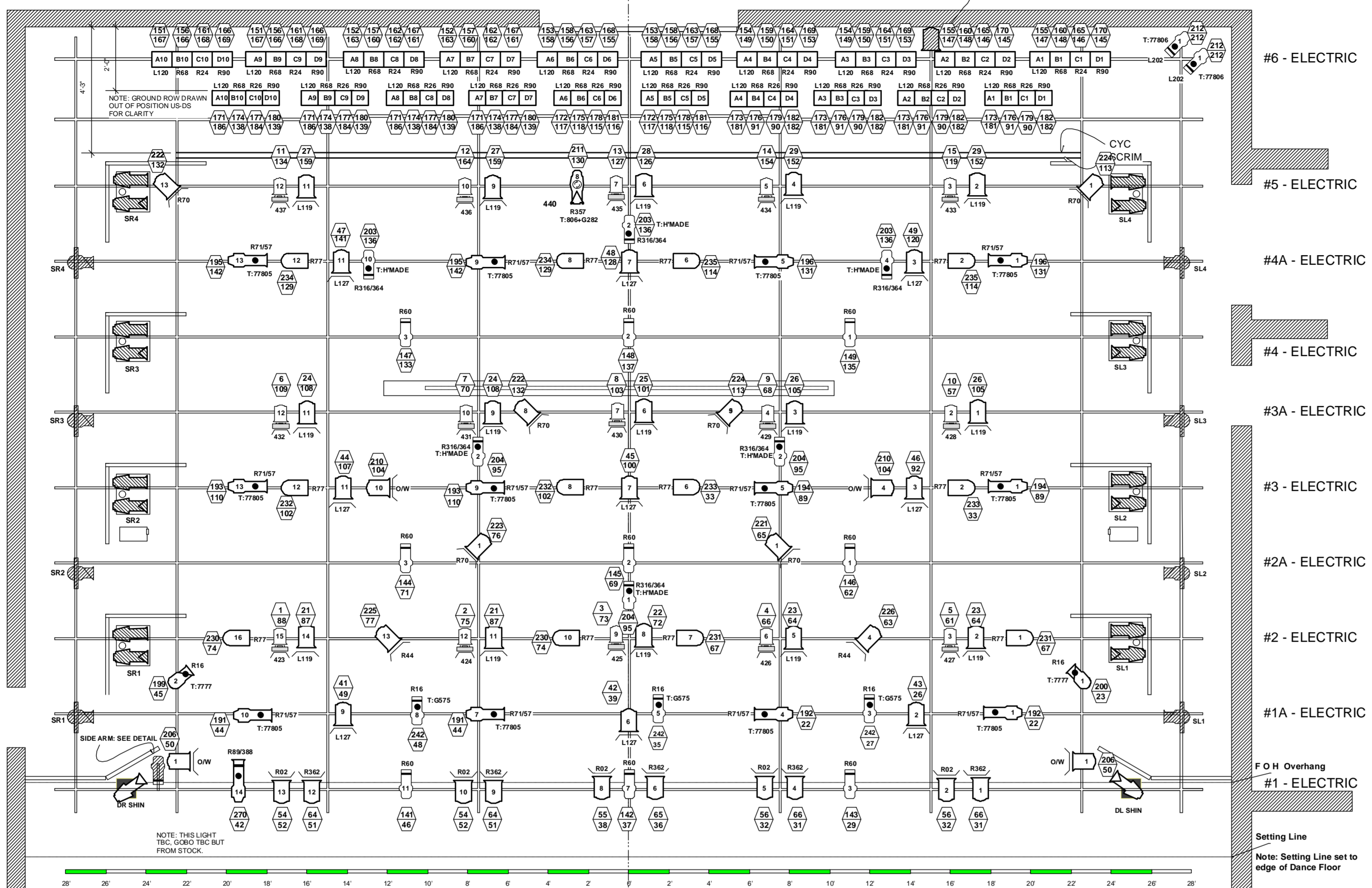
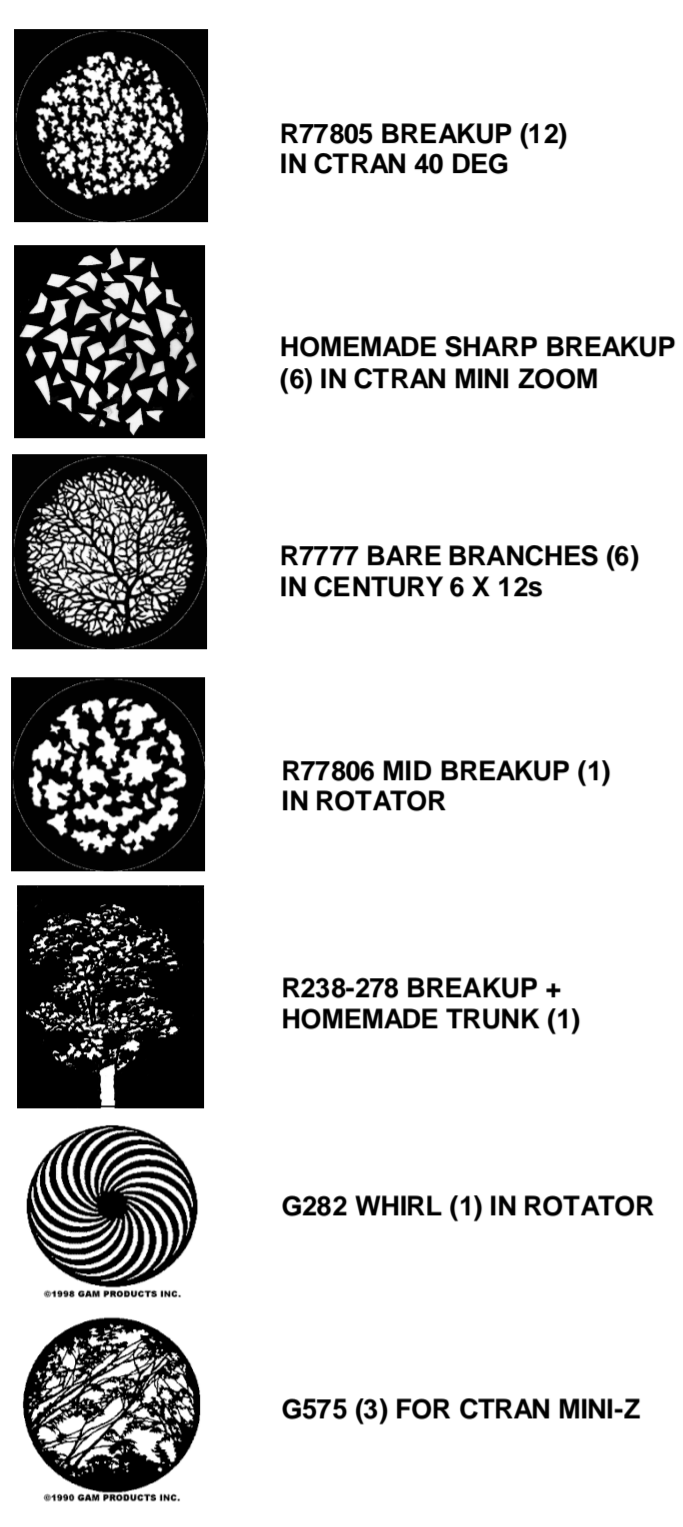


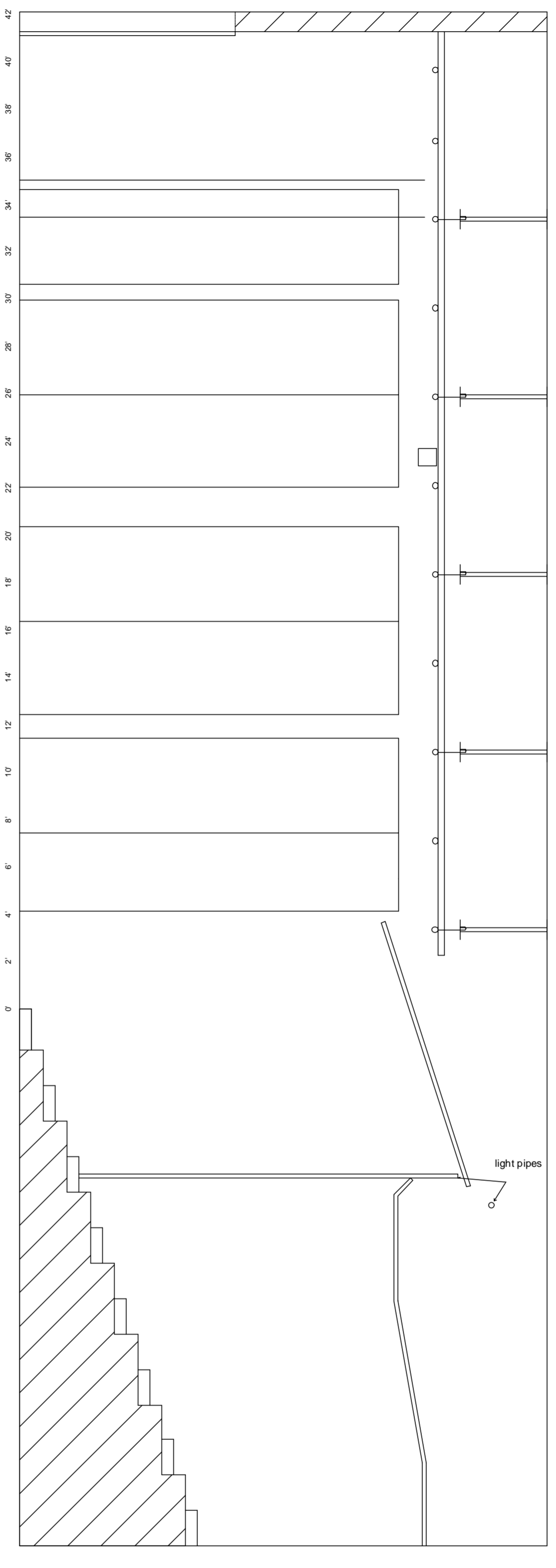
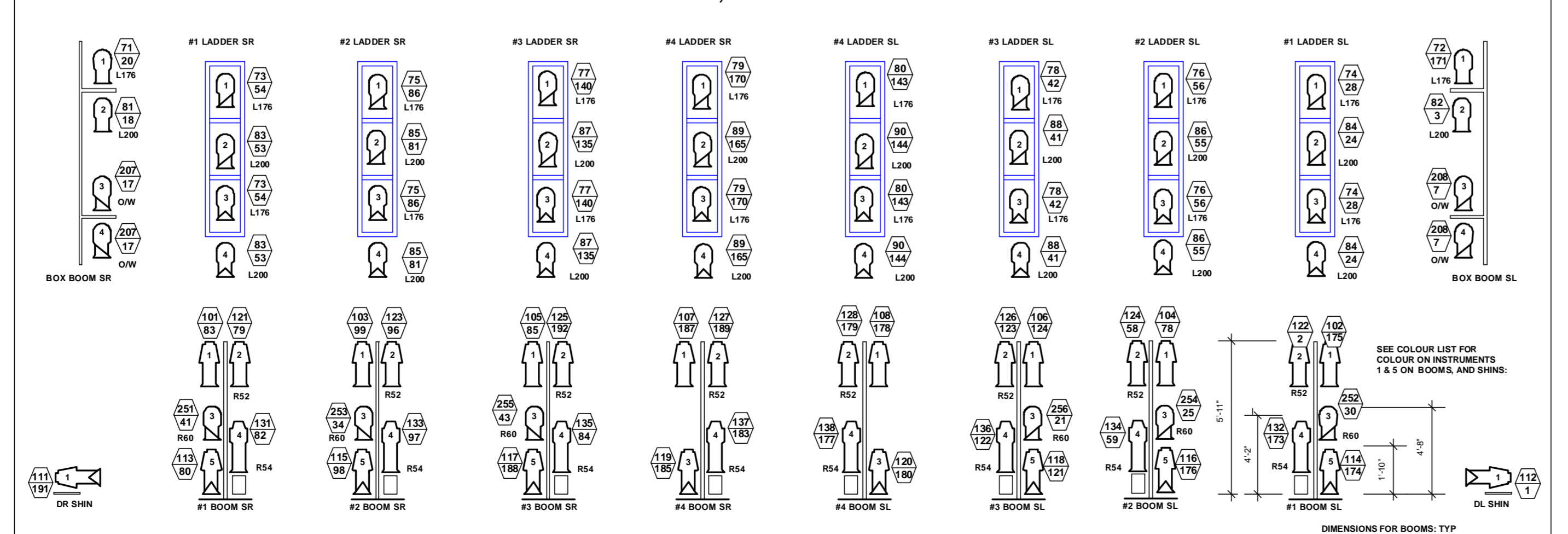
I, US-DS PIPE H, US-DS PIPE G, US-DS PIPE F, US-DS PIPE E, US-DS PIPE D, US-DS PIPE C, US-DS PIPE B, US-DS PIPE A, US-DS PIPE

US TAIL DOWN

GOBOS IN USE



BOOMS, LADDERS AND SHINS



CROSS SECTION

SCROLLERS

15 ON FRESNELS FOR BACK LIGHT (STRAND EHT WINTER SCROLL)

FRAME #	COLOUR	FRAME #	COLOUR
0	R00	0	R00
1	R18	1	R09
2	R32	2	R35
3	R26	3	R25
4	R34	4	R35
5	R48	5	R77
6	R57	6	R52
7	R58	7	R56
8	R82	8	R388
9	R64	9	R80
10	R80		
11	R95		

2 ON PAMI PROJECTORS IN FOH (CUSTOM)

FOLOW SPOT COLOUR

FRAME #	COLOUR
FRAME #1	R132
FRAME #2	R333
FRAME #3	R351
FRAME #4	R360

SIDE KIT COLOUR

NOTE: SHOW ORDER NOT YET KNOWN

DOWN STAGE ON BOOMS (MID #1-3)

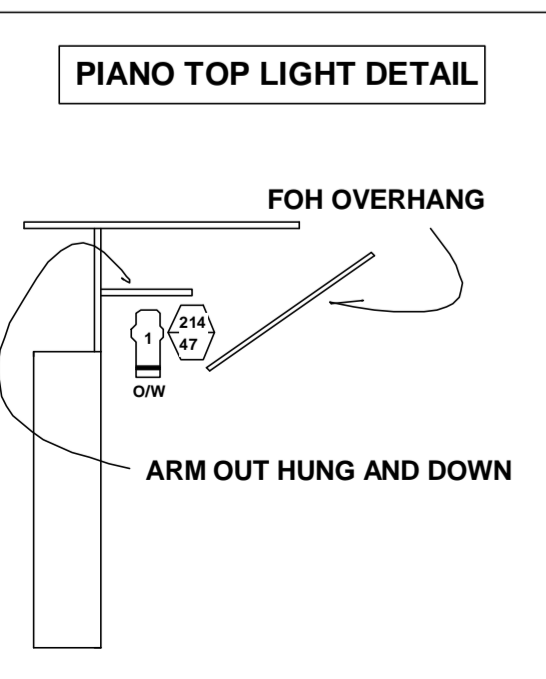
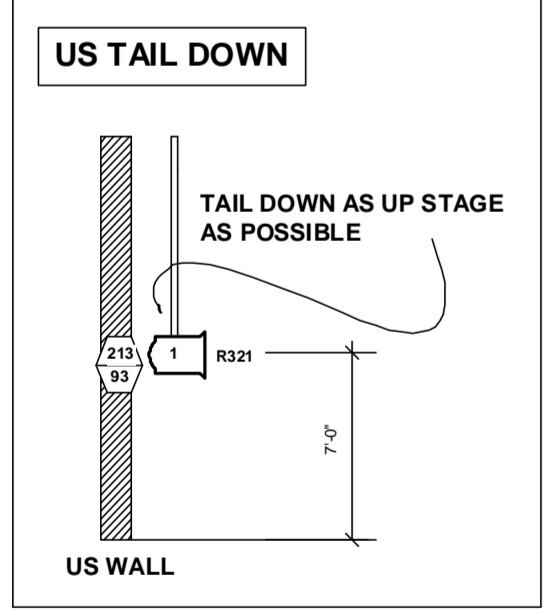
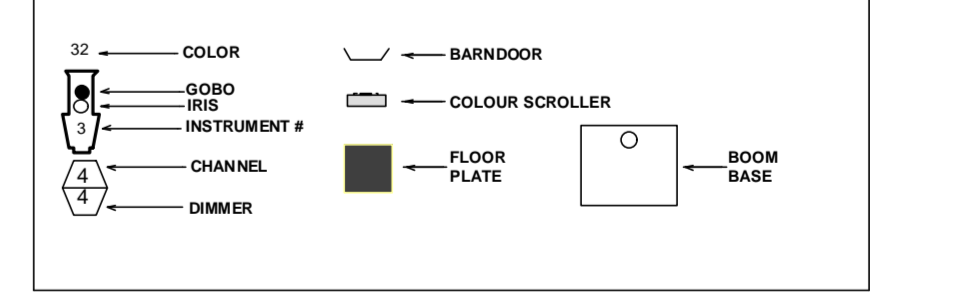
PIECES #	PIECE NAME	KICKER	MID	HEAD HIGH
1	TOP OF SHOW	R38	R60	R35
2	DREAMSCAPE	R73	R60	L201
3	VARIATIONS	R73	R60	L201
4	SWEDISH POLKA	R73	R60	L201
5	SOJOURN	R67	R60	R35
6	HORN PIPE	R318	R60	R09
7	AGITATO	R67	R60	R363
8	PAS CLASSIQUE	R31	R60	R363
9	LA BAYADERE	R318	R60	R19
10	JAZZBO BROWN	R38	R60	R04
11	PROMISE OF ANGELS	R67	R60	R363
12	RING OF KERRY	R41	R60	L201
13	PLUSE	R31	R60	R04
14	SALUTE			

UP STAGE ON ALL BOOMS FOR ALL PIECES.

KICKER	HEAD
R54	R52

LEGEND

	PLOT	AVAIL. REM. STOCK
4" 600w CTRAN MINI ZOOM	22	12
4.5" X 9" 1-kw LEKO (2w/RIS) (Strand)	26	30
6" X 9" 1-kw LEKO (16 w/RIS) (Strand)	16	16
6" X 12" 1-kw LEKO (Strand)	0	36
4.5" X 6.5" 750w LEKO (Century)	16	--
6" X 9" 750w LEKO (Century)	14	29
6" X 12" 750w LEKO (Century)	35	36
6" X 9" 1-kw LEKO (Colortran - 40)	20	20
25-50 ZOOM 1-kw LEKO (Colortran)	1	0
8" 1-kw Patt 223 FRESNEL	47	52
6" 1-kw FRESNEL (Colortran)	15	12
8" 1-kw Par-64 MFL	12	20
PANI BP2 cw 18 CM LENS	2	2
ROSCO 1500 FOG MACHINE	2	2
CYC PALLAS-4	10	--
1-kw CTRAN CYCLIGHT	10	--
S-4 50 W/ GOBO ROTATOR	1	1
1-kw TROUPERETTE FOLLOW SPOT	2	2
TOTALS:	250	270



VER: 2
 CHKD. BY:
 DRN. BY: CHRISTINA CICKO
 DATE: August 9, 2001
 SCALE: 1/4" = 1'
 DRW. #:
1 of 1

LIGHT PLOT

DANCE TRAINING 2001

LIGHTING DESIGN BY: PAUL DAVIES
 LIGHTING DESIGN ASSISTANT: CHRISTINA CICKO
 DATE: August 9, 2001

The Banff Centre
MARGARET GREENHAM THEATRE

Box 1020, Banff, Alberta, Canada
 T0L 0G0
 Tel: (403) 762-6284
 Fax: (403) 762-6334