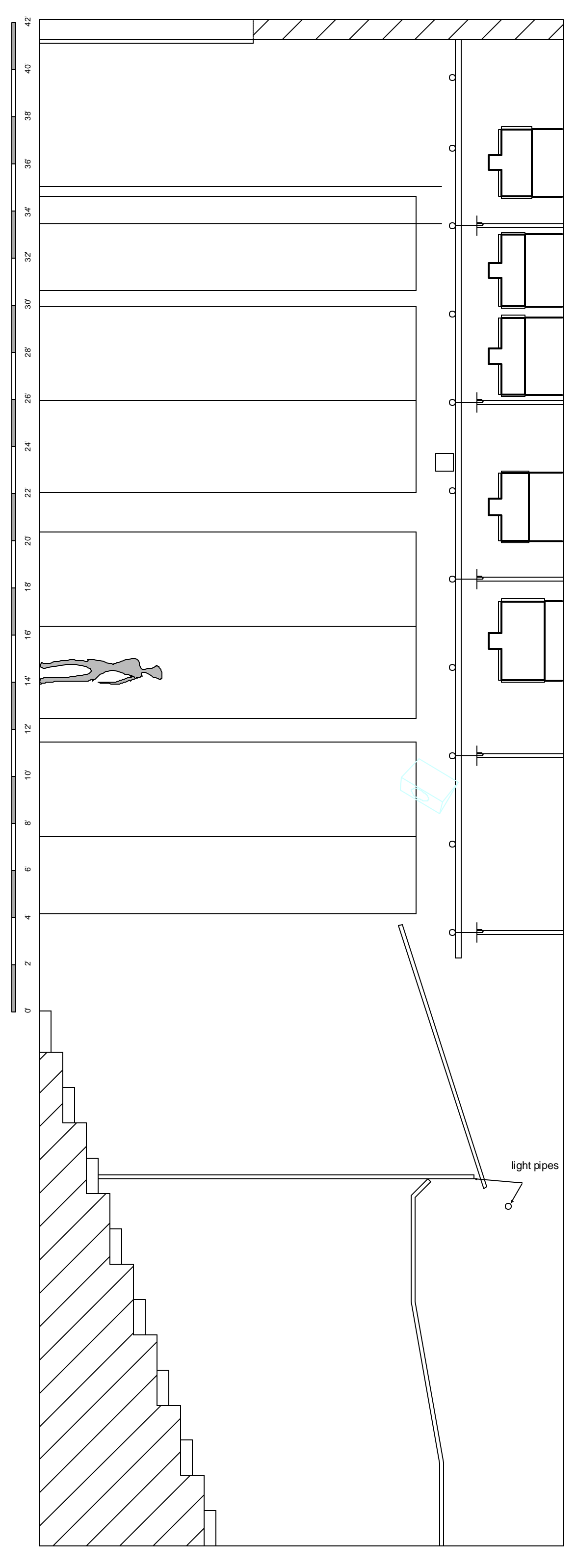
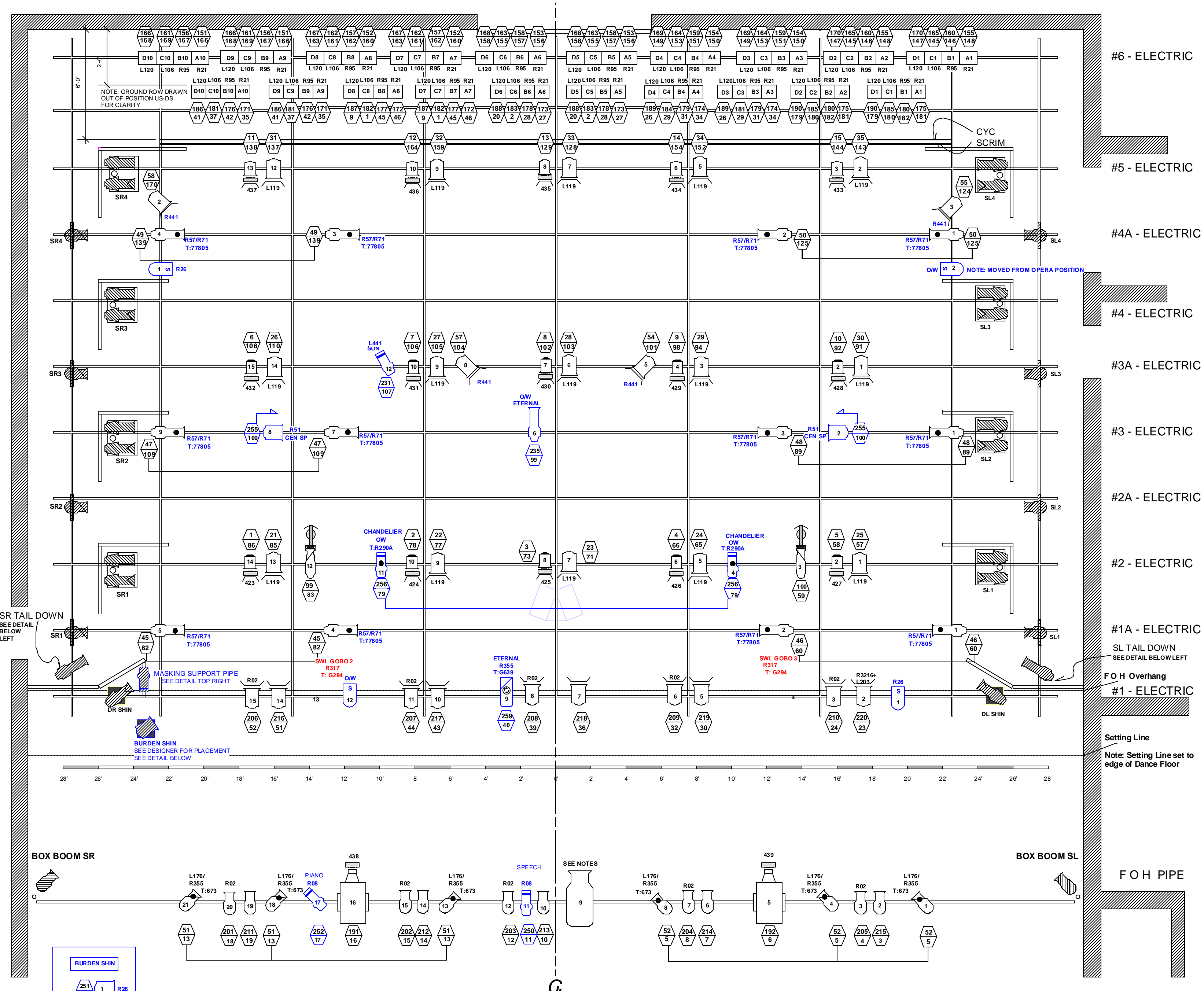


NOTES

1. INSTRUMENTS ON ELECTRICS ARE NUMBERED SL-SR
INSTRUMENTS ON US-DS PIPES ARE NUMBERED DS-US
INSTRUMENTS AT INTERSECTIONS ARE ON ELECTRICS

I, US-DS PIPE H, US-DS PIPE G, US-DS PIPE F, US-DS PIPE E, US-DS PIPE D, US-DS PIPE C, US-DS PIPE B, US-DS PIPE A, US-DS PIPE



CROSS SECTION

SCROLLERS

1 CHROMA CUE WITH MYLAR AS SANYO LCD PROJECTOR DOUSER

15 ON FRESNELS FOR BACK LIGHT (CUSTOM)		2 ON PANI PROJECTORS IN FOH (CUSTOM)		2 BACKWAY ON RENTED SR-20 DEG	
FRAME #	COLOUR	FRAME #	COLOUR	FRAME #	COLOUR
0	L201	0	R00	0	R00
1	L132	1	R09	1	L202
2	R385	2	R35	2	R02
3	R85	3	R25	3	R09
4	R73	4	R365	4	R316
5	R56	5	R77	5	R321
6	R355	6	R52	6	R22
7	R27	7	R56	7	R333
8	R321	8	R388	8	L106
9	R89	9	R89	9	R50
10	L441	10	R89	10	R51
11	R40	11	R35	11	R355
		12	R356	12	R356
		13	R365	13	R365
		14	R71	14	R71
		15	R77	15	R77

SIDE KIT COLOUR

DOWN STAGE ON BOOMS

PIECES #	PIECE NAME	SHIN	MD	HEAD HIGH	FOLLOW SPOT COLOUR
1	Barré Work	R333	R318	R33	FRAME #1 R119
2	Demos	R333	R318	R33	FRAME #2 R351
3	Diagona Pointe	R333	R318	R33	FRAME #3 R305
4	Atlegress	R333	R318	R33	FRAME #4 L203
5	Eternal Source	L176	L127	R318	
6	Arquius	L176	L127	R318	
7	Ecoe Gratum Solo	L176	L127	R318	
8	Ecoe Gratum	R08	R47	R318	
9	Sleeping Beauty	R08	R27	R318	
10	Burden	R333	R58	R33	
11	Caprice Creole	R333	R58	R33	
12	Journey	R333	R58	R33	
13	Sweet Second Thoughts	R88	R58	R42	
14	Salute	R333	R58	R33	

UP STAGE ON ALL BOOMS FOR ALL PIECES EACH SHOW

DANCE TRAINING	SHIN	HEAD
	R365	L201

LEGEND

Symbol	Item	PLOT	REM.	AVAIL. STOCK
	4" 600w CTRAN MINI ZOOM	9	4	12
	4.5" X 6.5" 1-kw LEKO(2w/IRIS) (Strand)	14		30
	6" X 9" 1-kw LEKO (16 w/IRIS) (Strand)	16		
	6" X 12" 1-kw LEKO (Strand)	3		
	4.5" X 6.5" 750w LEKO (Century)	16		
	6" X 9" 750w LEKO (Century)	14		29
	6" X 12" 750w LEKO (Century)	22		36
	6" X 9" 1-kw LEKO (Colortran - 40)	24	-4	20
	25-50 ZOOM 1-kw LEKO (Colortran)	0	0	0
	6" 1-kw FRESNEL (Strand)	7	-1	6
	8" 1-kw Pat 223 FRESNEL	41	9	52
	6" 1-kw FRESNEL (Colortran)	12	0	12
	8" 1-kw Par-64 MFL	0	20	20
	PANI BP2 cw 18 CM LENS	2	0	2
	ROSCO 1500 FOG MACHINE	1	1	2
	CYC PALLAS-4	10	10	10
	1-kw CTRAN CYCLIGHT	10	10	10
	28 DEGREE ETC SOURCE 4	2	-2	0
	36 DEGREE ETC SOURCE 4	2	-2	0
	1-kw TROUPERETTE FOLLOW SPOT	1	1	2
	30 DEGREE ALTMAN 1KL cw ROSCO SINGLE SPIN ROTATOR	2	0	2
	STROBE	4	0	4
TOTALS:		209		270

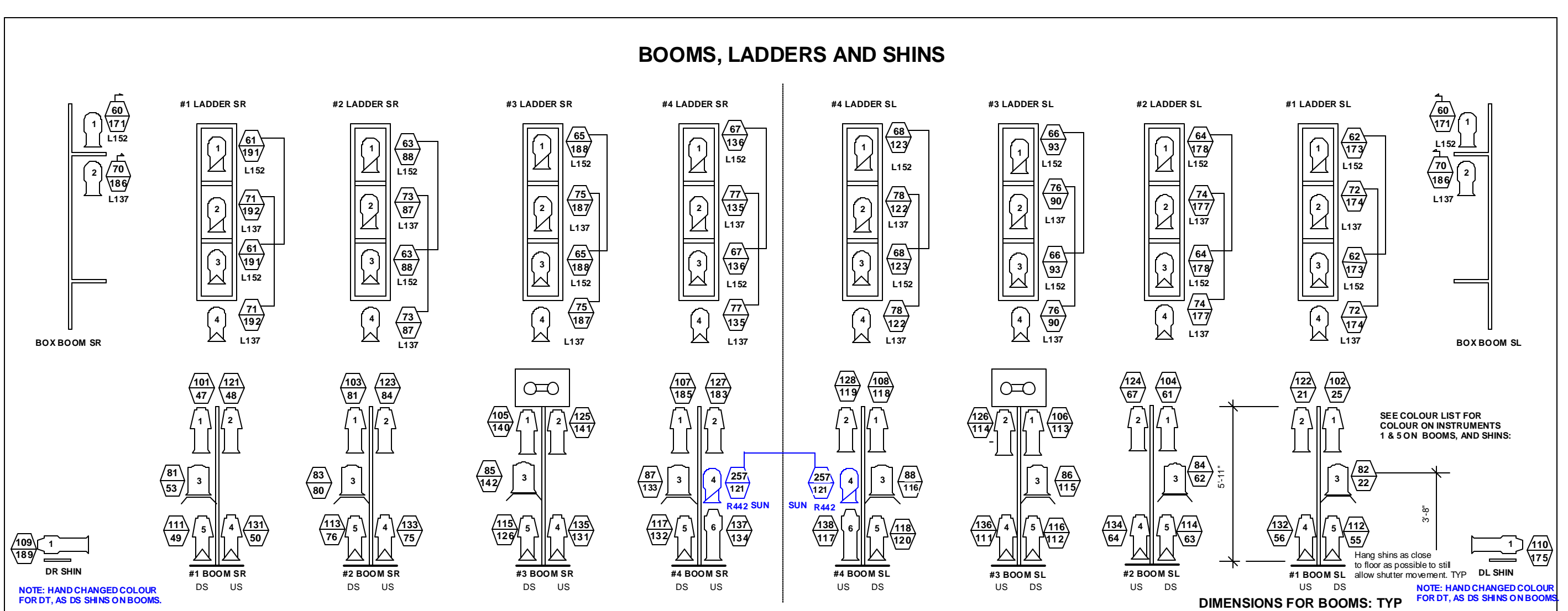
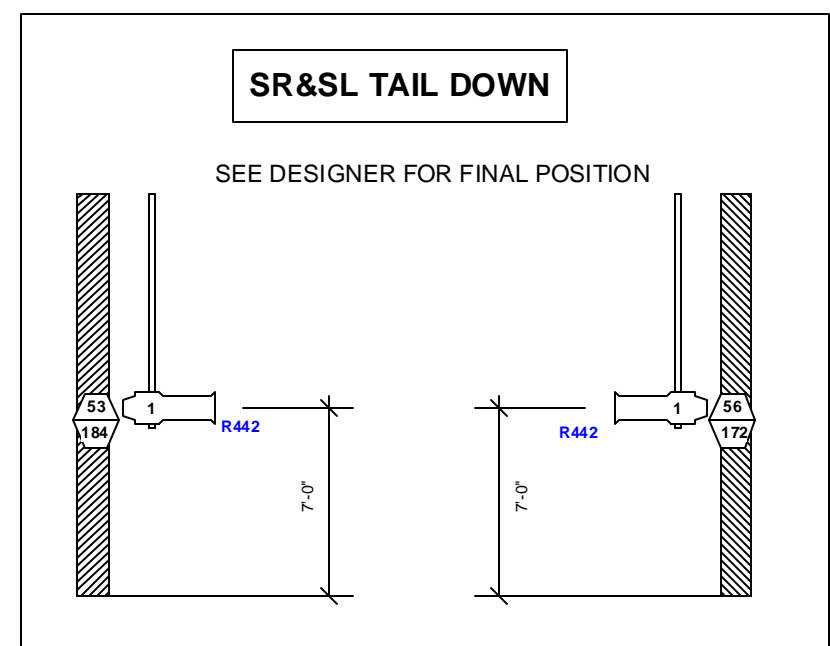
GOBOS IN USE

Gam 673 Linear Breakup 2 (6), in Century 6 x 12's FOH.

Rosco 77805 Leaf Breakup Med (12), in Ctran 40's 1A, 3, 4 E. Dance Training, Swap with Below at change.

Rosco 77290A Chandelier (2), in Mini Zooms; 2nd Electric. Dance Training "Sleeping" special.

Gam 639, Whirlpool (1), in Rotator in Altman 30 1KL; E Pipe. Dance Tr. Training "Eternal" special.



COLOUR LEGEND

REP PLOT

DANCE TRAINING SPECIALS

VER: 5
CHKD BY:
DRL BY: LAURA SOUTH & JEFF HARRISON
DATE: July 23, 2002
SCALE: 1/4" = 1'
DRW. #:

1 of 1

LIGHT PLOT

DANCE TRAINING 2002

LIGHTING DESIGN BY: PAUL DAVIES
LIGHTING DESIGN ASSISTANT: LAURA SOUTH
DATE: JULY 2, 2002

The Banff Centre
MARGARET GREENHAM THEATRE
Box 1020, Banff, Alberta, Canada
Tel: (403) 762-6284
Fax: (403) 762-6334

DATE: JULY 31 - AUGUST 3, 2002